

## What's New in GemFire Enterprise 5.7?

GemFire Enterprise 5.7 delivers consistent system response time, lower cost of ownership and significant performance boost.

### CONSISTENT AND PREDICTABLE RESPONSE TIME

Addition of two key features in GemFire Enterprise 5.7 guarantees consistent response time under wide ranging load conditions.

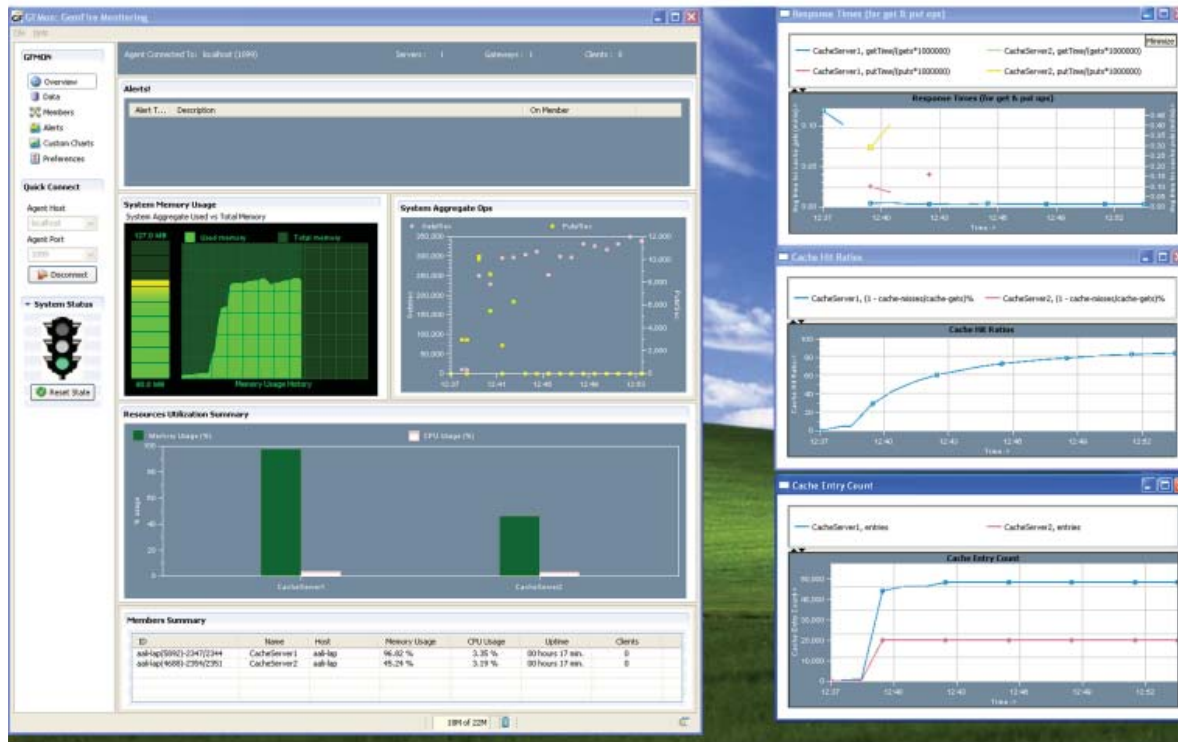
- **Automatic Load Conditioning:** To accommodate varied degree of user loads, enterprises add or remove servers in a cluster environment at runtime. However, such deployments often require manual intervention in order to utilize the added server capacity to deliver the consistent throughput rate. GemFire Enterprise allows dynamic server scalability at runtime and now with version 5.7, it offers unique feature wherein client connections to the servers can be configured to automatically and seamlessly migrate to less loaded servers to balance the overall transaction load. This capability not only ensures optimal server utilization but also helps to guarantee predictable response time.
- **Scalable Client Subscriptions:** A distributed computing environment consists of diverse set of clients that subscribe to tailored data and event sets. These clients connect over varied range of network protocols that span from connectivity over a LAN network to loosely connected clients that use low bandwidth networks. To support such diverse client connections without impacting the overall system throughput, GemFire Enterprise 5.7 supports durable client subscriptions that allow queuing of clients' data and event in memory with the provision of overflowing to disk. This enables guaranteed delivery of data and events to each client without throttling the publisher of the data. The end result is a reliable system response time irrespective of type of clients' connectivity.

### LOWER TOTAL COST OF OWNERSHIP

Reducing management and administration cost of in-memory data distribution has been one of the key differentiating factor for GemFire Enterprise and the version 5.7 is not an exception to this rule. Three key features have been added in version 5.7 to further reduce the cost of ownership and simplify the deployment of the product.

- **Simple Server Discovery:** A new server discovery service has been added in GemFire Enterprise 5.7 that maintains up-to-date information about the status and load of each server in the system. Additionally, instead of defining the list of servers to connect in their configuration files, the clients would now connect to this server discovery service to determine the best suitable server to connect. This setup greatly simplifies the deployment efforts and reduces the manageability cost for a large scale deployment.
- **Network Resiliency:** A distributed system is not immune to network hiccups that can split a system into multiple isolated islands of clusters. The separation of cluster members causes incoherent data storage in memory with different clients updating different cluster of nodes. GemFire Enterprise 5.7 has enhanced the detection and recovery of a split system in the event of network glitch and prevents clients from connecting to server nodes that are isolated from the main distributed system. By eliminating inconsistent view of the data in memory, GemFire Enterprises greatly reduces the administration and management cost while improving system uptime.

- Enhanced Monitoring Tool:** The user friendly graphical user interface monitoring tool, GFMon, has been enhanced in GemFire Enterprise 5.7 to provide custom data charts to view frequently used statistical data including data throughput rate, garbage collection information and data distribution across members. Administrators can also build custom chart templates to simplify data collections by users. These new monitoring features enable administrators to oversee the health of a distributed system without incurring significant cost of building custom GUI tool.



## PERFORMANCE BOOST

Considerable performance improvements have been made in GemFire Enterprise 5.7 to boost the speed of data retrieval by 50-100% for data partitioned over cluster of nodes. Moreover, addition of bulk data operations has increased performance by 10x as compared to individual data store and retrieval calls.



### Corporate Headquarters:

1260 NW Waterhouse Ave., Suite 200 Beaverton, OR 97006  
Phone: 503.533.3000 Fax: 503.629.8556  
info@gemstone.com

### Regional Sales Offices:

New York | 5 Penn Plaza, 23rd Floor New York, NY 10001 | Phone: 646.530.8458  
Washington D.C. | Phone: 301.564.0550  
California | 444 Castro Street Suite 520 Mountain View, CA 94040